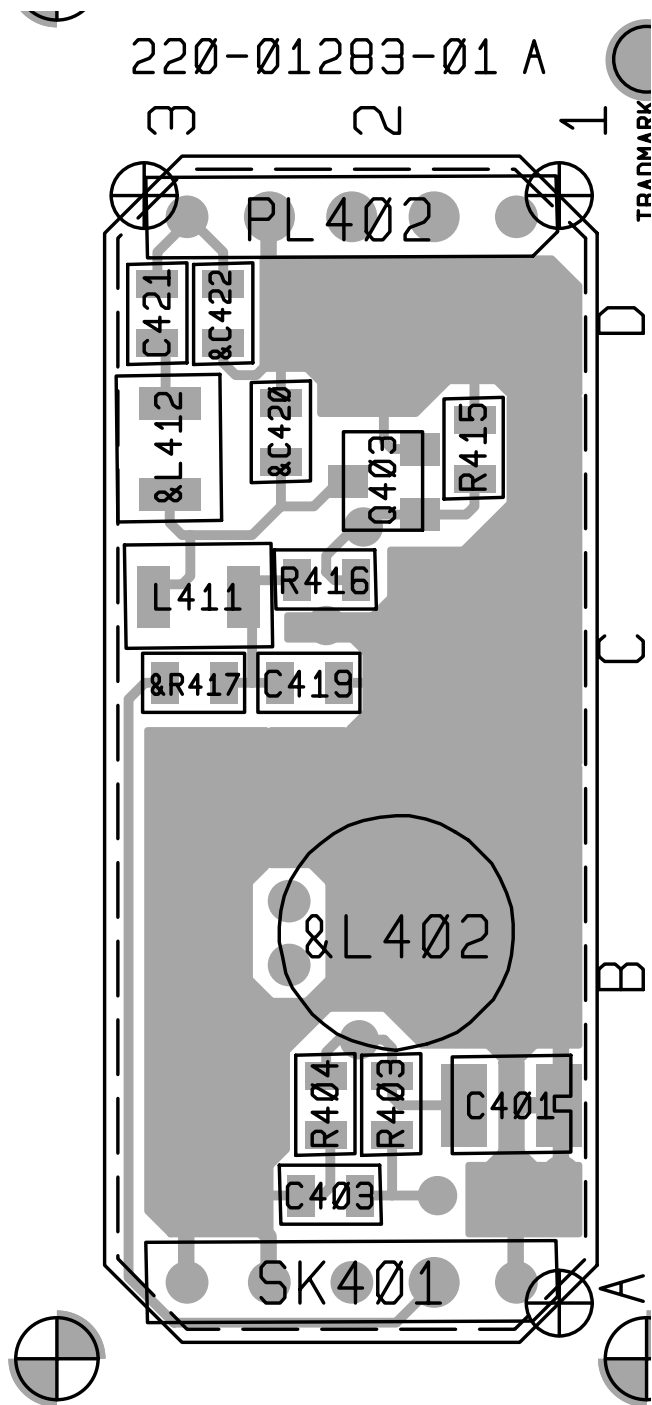


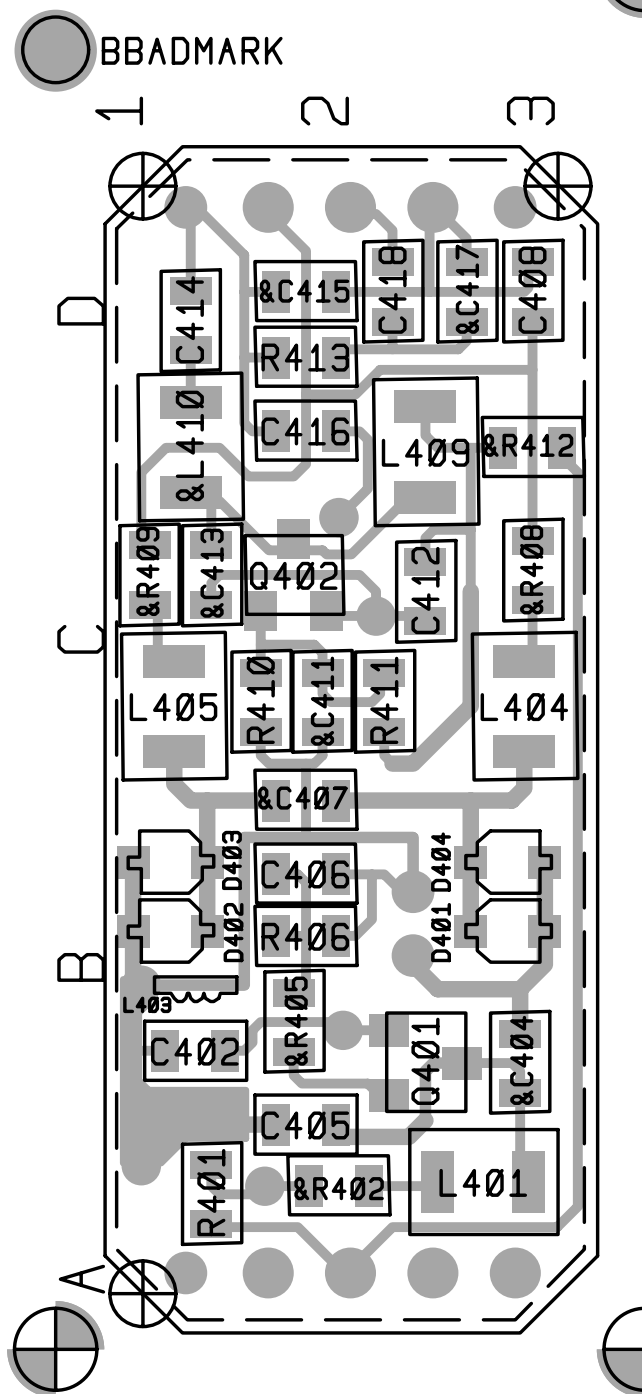
6.4 T3000-3000/-4000 VCO PCB

T3000-3000/-4000 VCO Parts List (IPN 220-01283-01)

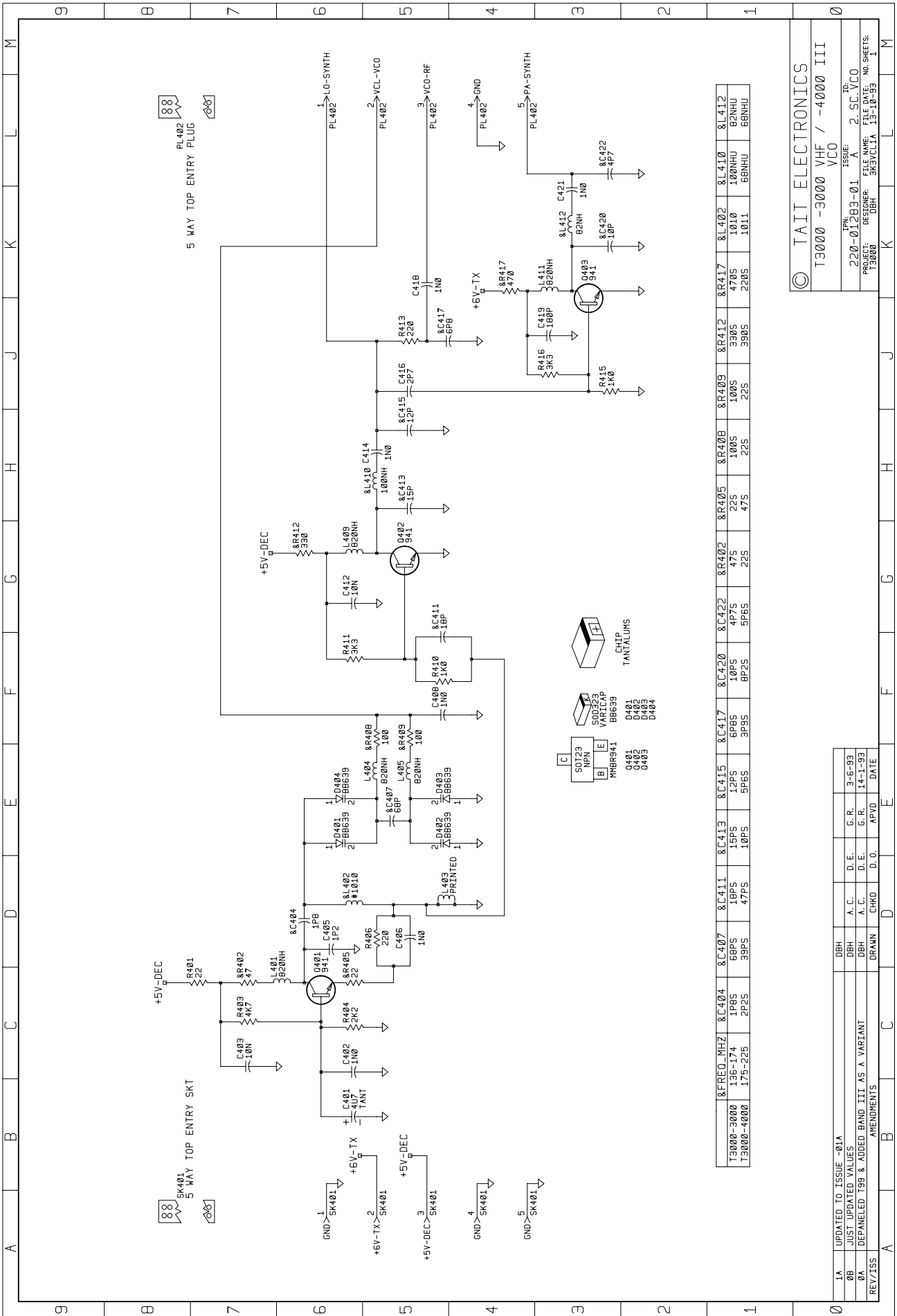
Ref	Var	IPN	Description	Ref	Var	IPN	Description
C401		014-07470-00	CAP TANT CHIP 4U7 3.5 X 2.8MM 267 SERIES			220-01283-01	PCB T3000 VHF/BND III VCO
C402		015-24100-08	CAP CER 0805 CHIP 1N 10% X7R 50V				
C403		015-25100-08	CAP CER 0805 CHIP 10N 10% X7R 50V				
&C404	3XXX	015-21180-01	CAP CER 0805 CHIP 1P8 +/-0.25 NPO 50	Note:			The first character in the variant column refers to the frequency band, as follows:
&C404	4XXX	015-21220-01	CAP CER 0805 CHIP 2P2 +/-0.25P NPO 5				
C405		015-21120-01	CAP CER 0805 CHIP 1P2 +/-0.25 NPO 50V			3XXX	136-174MHz
C406		015-24100-08	CAP CER 0805 CHIP 1N 10% X7R 50V			4XXX	174-208MHz
&C407	3XXX	015-23100-01	CAP CER 0805 CHIP 100P 5% NPO 50V				
&C407	4XXX	015-22390-01	CAP CER 0805 CHIP 39P 5% NPO 50V				
C408		015-24100-08	CAP CER 0805 CHIP 1N 10% X7R 50V				
&C411	3XXX	015-22180-01	CAP CER 0805 CHIP 18P 5% NPO 50V				
&C411	4XXX	015-22470-01	CAP CER 0805 CHIP 47P 5% NPO 50V				
C412		015-25100-08	CAP CER 0805 CHIP 10N 10% X7R 50V				
&C413	3XXX	015-22150-01	CAP CER 0805 CHIP 15P 5% NPO 50V				
&C413	4XXX	015-22100-01	CAP CER 0805 CHIP 10P +/-0.5P NPO 50				
C414		015-24100-08	CAP CER 0805 CHIP 1N 10% X7R 50V				
&C415	3XXX	015-22120-01	CAP CER 0805 CHIP 12P 5% NPO 50V				
&C415	4XXX	015-21560-01	CAP CER 0805 CHIP 5P6 +/-0.25P NPO 5				
C416		015-21270-01	CAP CER 0805 CHIP 2P7 +/-0.25P NPO 50V				
&C417	3XXX	015-21680-01	CAP CER 0805 CHIP 6P8 +/-0.25P NPO 5				
&C417	4XXX	015-21390-01	CAP CER 0805 CHIP 3P9 +/-0.25P NPO 5				
C418		015-24100-08	CAP CER 0805 CHIP 1N 10% X7R 50V				
C419		015-23180-01	CAP CER 0805 CHIP 180P 5% NPO 50V				
&C420	3XXX	015-22100-01	CAP CER 0805 CHIP 10P +/-0.5P NPO 50				
&C420	4XXX	015-21820-01	CAP CER 0805 CHIP 8P2 +/-0.25P NPO 5				
C421		015-24100-08	CAP CER 0805 CHIP 1N 10% X7R 50V				
&C422	3XXX	015-21470-01	CAP CER 0805 CHIP 4P7 +/-0.25P NPO 5				
&C422	4XXX	015-21560-01	CAP CER 0805 CHIP 5P6 +/-0.25P NPO 5				
D401		001-10006-39	(S) DIODE SMD VARICAP BB639 SOD323				
D402		001-10006-39	(S) DIODE SMD VARICAP BB639 SOD323				
D403		001-10006-39	(S) DIODE SMD VARICAP BB639 SOD323				
D404		001-10006-39	(S) DIODE SMD VARICAP BB639 SOD323				
L401		056-10820-00	IND FXD SMD 820NH 3.2*2.5*1.6 SIEMENS SMI				
&L402	3XXX	055-01010-01	COIL TOROID 76NH 11T T3000				
&L402	4XXX	055-01011-00	COIL TOROID 51NH 10T T3000				
L404		056-10820-00	IND FXD SMD 820NH 3.2*2.5*1.6 SIEMENS SMI				
L405		056-10820-00	IND FXD SMD 820NH 3.2*2.5*1.6 SIEMENS SMI				
L409		056-10820-00	IND FXD SMD 820NH 3.2*2.5*1.6 SIEMENS SMI				
&L410	3XXX	056-10100-00	IND FXD SMD 100NH 3.2*2.5*1.6 SIEMENS				
&L410	4XXX	056-10068-00	IND FXD SMD 68NH 3.2*2.5*1.6 SIEMENS				
L411		056-10820-00	IND FXD SMD 820NH 3.2*2.5*1.6 SIEMENS SMI				
&L412	3XXX	056-10082-00	IND FXD SMD 82NH 3.2*2.5*1.6 SIEMENS				
&L412	4XXX	056-10068-00	IND FXD SMD 68NH 3.2*2.5*1.6 SIEMENS				
PL402		240-00026-27	CONN 5WAY MALE INTERCONCT STRIP PCB MN				
Q401		000-10009-41	(S) XSTR SMD MMBR941L RF LOW NOISE SOT23				
Q402		000-10009-41	(S) XSTR SMD MMBR941L RF LOW NOISE SOT23				
Q403		000-10009-41	(S) XSTR SMD MMBR941L RF LOW NOISE SOT23				
R401		036-12220-00	RES M/F 0805 CHIP 22E 5%				
&R402	3XXX	036-12470-00	RES M/F 0805 CHIP 47E 5%				
&R402	4XXX	036-12220-00	RES M/F 0805 CHIP 22E 5%				
R403		036-14470-00	RES M/F 0805 CHIP 4K7 5%				
R404		036-14220-00	RES M/F 0805 CHIP 2K2 5%				
&R405	3XXX	036-12220-00	RES M/F 0805 CHIP 22E 5%				
&R405	4XXX	036-12470-00	RES M/F 0805 CHIP 47E 5%				
R406		036-13220-00	RES M/F 0805 CHIP 220E 5%				
&R408	3XXX	036-13100-00	RES M/F 0805 CHIP 100E 5%				
&R408	4XXX	036-12220-00	RES M/F 0805 CHIP 22E 5%				
&R409	3XXX	036-13100-00	RES M/F 0805 CHIP 100E 5%				
&R409	4XXX	036-12220-00	RES M/F 0805 CHIP 22E 5%				
R410		036-14100-00	RES M/F 0805 CHIP 1K 5%				
R411		036-14330-00	RES M/F 0805 CHIP 3K3 5%				
&R412	3XXX	036-13330-00	RES M/F 0805 CHIP 330E 5%				
&R412	4XXX	036-13390-00	RES M/F 0805 CHIP 390E 5%				
R413		036-13220-00	RES M/F 0805 CHIP 220E 5%				
R415		036-14100-00	RES M/F 0805 CHIP 1K 5%				
R416		036-14330-00	RES M/F 0805 CHIP 3K3 5%				
&R417	3XXX	036-13470-00	RES M/F 0805 CHIP 470E 5%				
&R417	4XXX	036-13220-00	RES M/F 0805 CHIP 220E 5%				
SK401		240-02010-91	CON 5WAY FEM LOWPROF SKT STRIP PCB MNT				



T3000-3000/-4000 VCO PCB (IPN 220-01283-01) - Top Side



T3000-3000/-4000 VCO PCB (IPN 220-01283-01) - Bottom Side



&FREQ_MHZ	&C411	&C413	&C415	&C417	&C420	&C422	&R402	&R405	&R408	&R409	&R412	&R417	&R410	&R412	&R410	&R412
T3000-3000	196-174	15PS	12PS	6PS	10PS	5PS	47S	22S	100S	100S	330S	470S	1010	1010	100NH	8412
T3000-4000	175-225	47PS	10PS	5PS	8PS	5PS	22S	47S	22S	22S	390S	220S	1011	1011	68NH	68NH

- SOT23 NPN
 - B E
 - MMBR341
 - 0401
 - 0402
 - 0403
 - 0404
- SOD323
 - 100CAP
 - BB659
 - 0401
 - 0402
 - 0403
 - 0404
- CHIP TANTALUMS
 - 100P
 - 100P
 - 100P
 - 100P
 - 100P
 - 100P

© TAIT ELECTRONICS

T3000 -3000 VHF / -4000 III VCO

ISSUE: 2 SC VCO

220-011283-01

PROJECT: DESIGNER: 3K3VCLIA DBH

FILE NAME: 13-10-99

NO. SHEETS: 1

REV/ISS	AMENDMENTS	DRWN	CHKD	D. O.	APVD	DATE
0A	DEPAELED T99 & ADDED BAND III AS A VARIANT	DBH	A. C.	D. E.	G. R.	14-1-93
0B	JUST UPDATED VALUES	DBH	A. C.	D. E.	G. R.	3-6-93
1A	UPDATED TO ISSUE -01A	DBH	A. C.	D. E.	G. R.	3-6-93

